

FOR MESSRS : _____

PB-FREE**SPECIFICATION FOR APPROVAL**

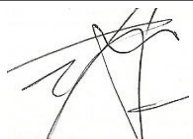
(FOR TV/ MNT 2Channel LED APPLICATION PURPOSE)

LED BACKLIGHTING B'dPART NO. : FIF27LD-03V2BUYER'S PART NO. :

APPROVED	REFERENCE

(PLEASE RETURN ONE OF THESE TO US IMMEDIATELY WITH YOUR SIGNATURE FOR APPROVAL)

KANG JIN TECHNOLOGY CO., LTD

TESTED BY	CHECKED BY	APPROVED BY
		

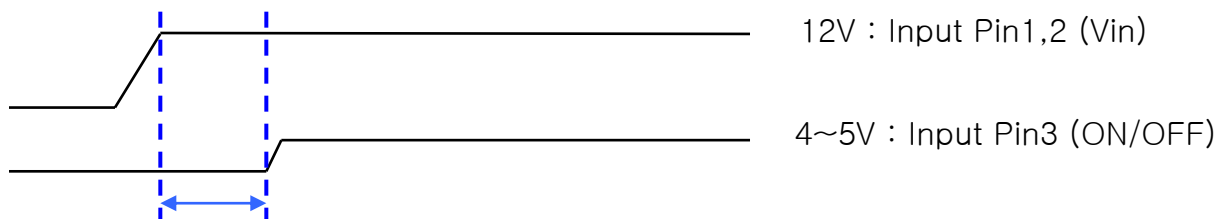
1. Electrical Characteristics

◎ Analog Dimming

NO	Items (Unit)	Sign.	Condition		Min.	Typ.	Max.
1	Input Voltage [Vdc]	Vin			11	12	13
2	Input Current [A]	Iin	Vin=12V	CTRL=0V	0.8	1.0	1.3
				CTRL=5V	0.4	0.6	0.8
4	Output Current 1,2[mA]	Iout	Vin=12V	CTRL=0V	200	230	260
				CTRL=5V	100	130	160
5	ON/OFF Control	ON	Vin=12V, ON/OFF=5V		Normal Operation		
		OFF	Vin=12V, ON/OFF=0V		Shut – Down		

2. Operating description

● Input Power Sequence



More Than 0.5sec

3. Functional Pin Description

3.1. Input Connector CN1 : JS-1125R-06 (CHAOSIN)

Pin No.	Symbol	Description
1,2	Vin	Input Voltage : 12V \pm 1V
3	ON / OFF	Power System Return (5V:ON, 0V:OFF)
4	CTRL	Dim Adjust, Apply 0V ~ 5Vdc to Control Current 0 V : MAX, 5V : MIN
5,6	GND	GND

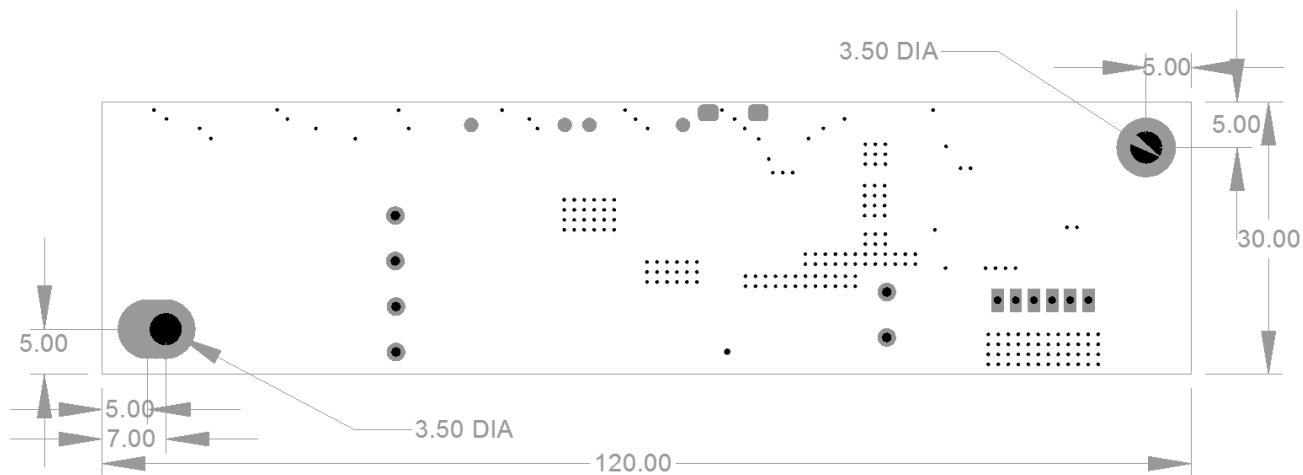
3.2. Output Connector CN2 : 12507WR-06L (Yeon - ho)

Pin No.	Symbol	Description
1	FB1	IRLED (current out)
2	NC	
3	Vled	VLED (voltage in)
4	Vled	VLED (voltage in)
5	NC	
6	FB2	IRLED (current out)

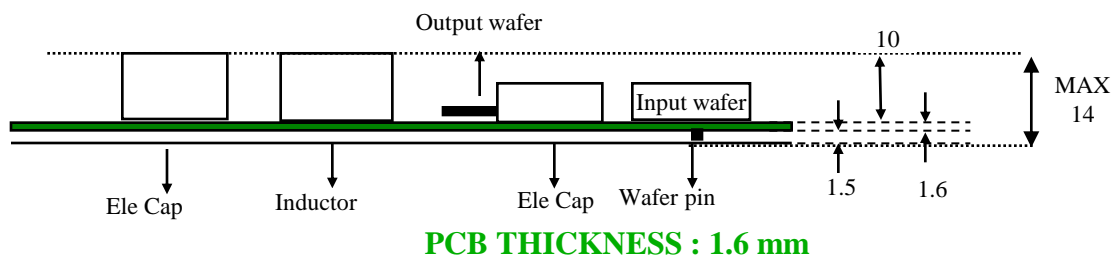
4. Mechanical Drawings

4.1. P.W.B

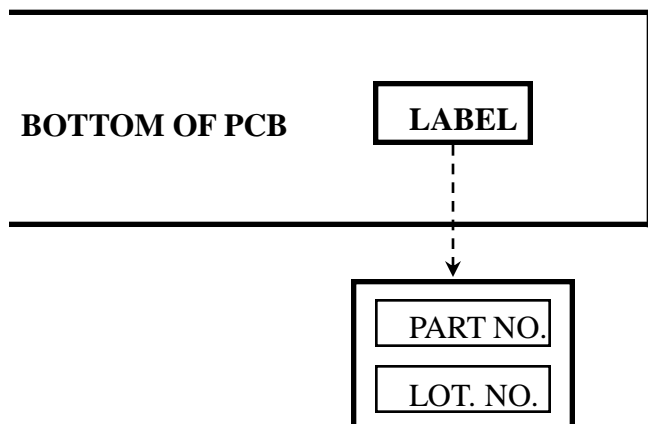
*. Unit : ±0.2mm



4.2. Trans & Connector



4.3. Marking



*.PART NO: FIF27LD-03V2

*.LOT NO.: 00000000-A

00 : MANUFACTURE

00: YEAR

00: MONTH

00: DAY

-A : LOT