

CONTENTS OF SPECIFICATION

INVERTER PART NO. : FIF27LD-10Y

NO.	CONTENTS	PAGE
1	Revision History	3 / 8
2	General Description	4 / 8
3	Application	4 / 8
4	Absolute Maximum Rating	4 / 8
5	Electrical Characteristics	5 / 8
6	Functional Pin Description	6 / 8
7	Operating description	7 / 8
8	Mechanical Drawings	8 / 8
<p>▶ APPENDIX 1 : PARTLIST ▶ APPENDIX 2 : CIRCUIT</p>		

1.Revision History

DATE	REV No.	PURPOSE	PAGE	CONTENTS OF ALTERATION

2.General Description

SCOPE:

This LED Driver was developed for 2channel led lamps of LCD backlight system.

3.Applications

- LCD Monitor /TV

4.Absolute maximum rating

- Input supply voltage : 11.0 ~ 13.0V
- Input current : 1.0A
- Output current : 220mA
- Input signal voltage : -0.3V ~ 6.0V
(On/Off /I Control)
- Ambient operating temperature : 0℃ ~ 60℃
- Storage temperature : -30℃ ~ 80℃
- Operating & Storage Humidity : 10% ~ 85%

5. Electrical Characteristics

◎ Analog Dimming

NO	Items (Unit)	Sign.	Condition		Min.	Typ.	Max.
1	Input Voltage [Vdc]	Vin			11	12	13
2	Input Current [A]	Iin	Vin=12V	CTRL=0V	0.65	0.77	0.9
				CTRL=5V	0.3	0.45	0.6
3	Output Voltage	Vout	Vin=12V	CTRL=0V	TBD	46	TBD
4	Output Current 1,2[mA]	Iout	Vin=12V	CTRL=0V	180	195	210
				CTRL=5V	100	115	130
5	ON/OFF Control	ON	Vin=12V, ON/OFF=5V		Normal Operation		
		OFF	Vin=12V, ON/OFF=0V		Shut – Down		

6. Functional Pin Description

6.1. Input Connector CN1 : JS-1125R-06 (CHAOSIN)

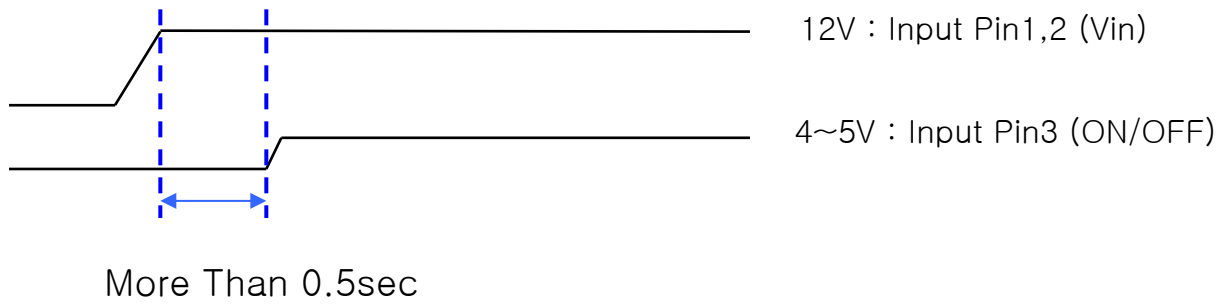
Pin No.	Symbol	Description
1,2	Vin	Input Voltage : 12V \pm 1V
3	ON / OFF	Power System Return (5V:ON, 0V:OFF)
4	CTRL	Dim Adjust, Apply 0V ~ 5Vdc to Control Current 0 V : MAX, 5V : MIN
5,6	GND	GND

6.2. Output Connector CN2 : 12507WR-06L (Yeon - ho)

Pin No.	Symbol	Description
1	FB1	IRLED (current out)
2	NC	
3	Vled	VLED (voltage in)
4	Vled	VLED (voltage in)
5	NC	
6	FB2	IRLED (current out)

7. Operating description

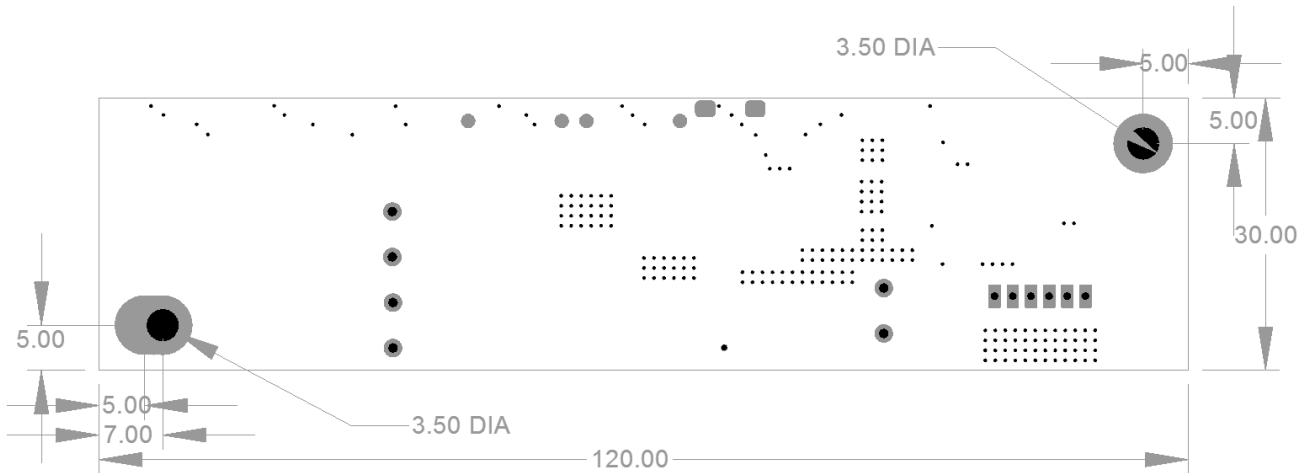
● Input Power Sequence



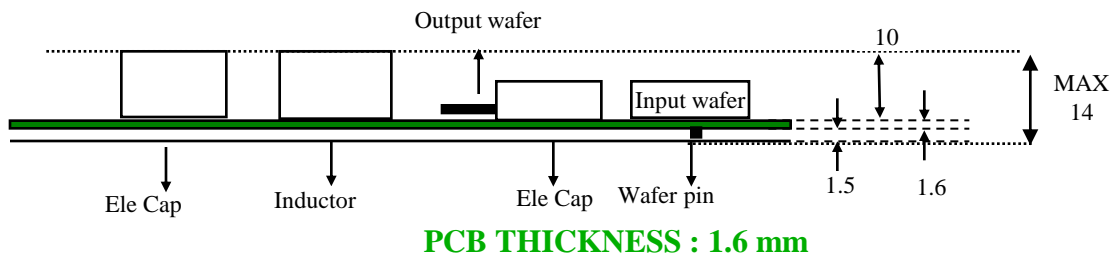
8. Mechanical Drawings

8.1. P.W.B

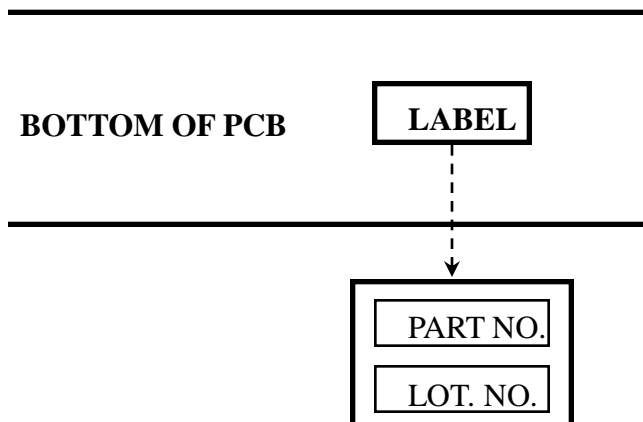
*. Unit : ±0.2mm



8.2. Trans & Connector



8.3. Marking



.PART NO: FIF27LD-10Y

*.LOT NO.: 00000000-0

00 :MANUFACTURE

00: YEAR

00: MONTH

00: DAY

-0: LOT

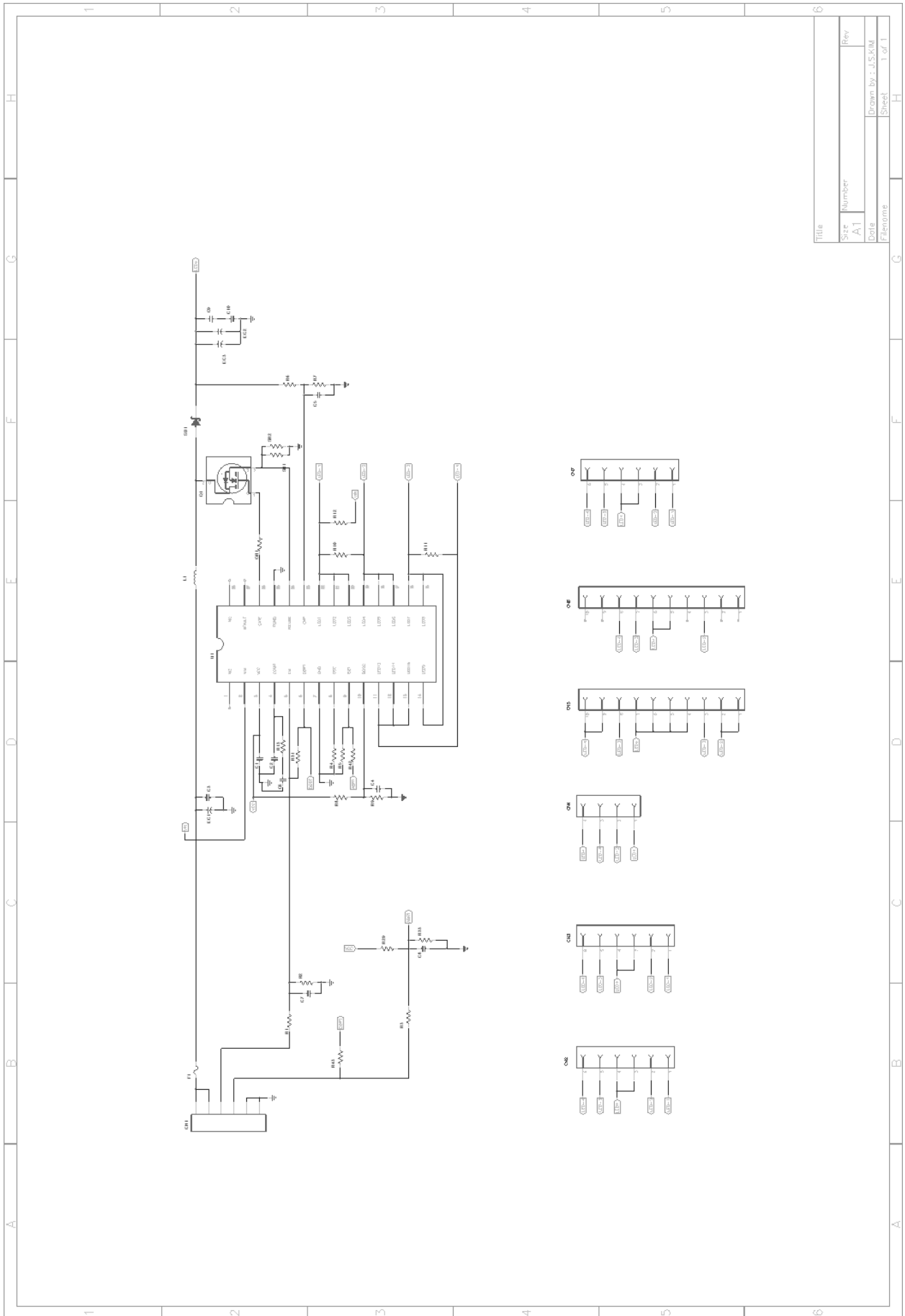
APPENDIX 1

- PART LIST

FIF27LD-10Y Parts List(Ver0.0)

NO.	Ref.	Part Type	1st. Vendor	2nd. Vendor	Q.ty
1	EC1	NXH 220uF 35V105°C 8*11.5	SAM YOUNG	RUBYCON	1
2	EC2,EC3	NXB 22uF 100V 105°C 8*11.5	SAM YOUNG	RUBYCON	2
3	CN1	20010WR-06, JS-1125R-06	YEON-HO , Chayo Shiunn	Equivalent	1
4	U1	MP3389-C355	MPS		1
5	Q1	AOD464 ,AP18N20GH	Alpha & Omega ,Advanced power	Equivalent	1
6	L1	47uH, 1280	DACOWELL	KEAIYA/DONGHEU NG	1
7	SD1	B3100	DIODES	Equivalent	1
8	C1,C7,C8	CC105K16V2012	Samsung	PDC,Taiyouden	3
9	C6	CC224K16V1608	Samsung	PDC,Taiyouden	1
10	C5	CC102K50V1608	Samsung	PDC,Taiyouden	1
11	GR1	CR1608J100	Samsung	Equivalent	1
13	R3	CR1608J683	Samsung	Equivalent	1
14	R1,R7,R31	CR1608J103	Samsung	Equivalent	3
15	R5	CR1608J913	Samsung	Equivalent	1
16	R10,R11	CR1608J000	Samsung	Equivalent	2
17	R2,R9,R33	CR1608J104	Samsung	Equivalent	3
18	R8	CR1608J204	Samsung	Equivalent	1
19	R4	CR1608J304	Samsung	Equivalent	1
20	R13	CR1608J561	Samsung	Equivalent	1
21	R42	CR1608J434	Samsung	Equivalent	1
22	R6	CR1608J514	Samsung	Equivalent	1
23	SR1,SR2	CR3216F0R22	Samsung	Equivalent	1
24	F1	CR3216J000	Samsung	Equivalent	1
25	CN2	12507WR-06	YEON-HO	Equivalent	1
26	P.W.B	P27LDE01-Ver5.0	CELTUM, PANAN ,Canyon	Liangji Youngdong	1

APPENDIX 2 - CIRCUIT



Title	
Size	Number
A1	Rev
Date	Drawn by : J.S.K.M
Filename	Sheet
	1 of 1